

# EDGE™

Siding. Pattern. Trim.



## PREMIUM PROFILED PATTERN AND SIDING

Interior & Outdoor Living Spaces

Edge offers a diverse selection of pattern and siding boards to best fit your project needs. We start with the highest-grade of kiln-dried lumber available, free of wane, defects, or large knots, and we carefully shape it to preserve its integrity. The meticulous processes, including hand sorting for quality and precise knife grinding, ensure naturally beautiful products with minimal waste for your next project.

### FEATURES

- All patterns manufactured to industry standards
- Lumber has small, tight knots and beautiful grain for best appearance
- Can be treated to meet application requirement



NOTE: Color will vary from board to board and lot to lot due to natural characteristics of wood. It is recommended you purchase your entire job, plus a minimum of 10% overage to ensure most consistent color.



View our  
Project  
Lookbook

[ufpEDGE.com](https://ufpEDGE.com)

Tag us in your Edge projects @ufpEDGE





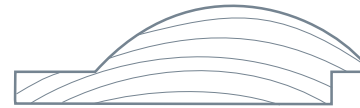
# PREMIUM PROFILED BOARD PATTERNS

## DROP SIDING (#105)



Nominal size	Actual size	Exposed face
1 x 6	5/8" x 5 <sup>3</sup> / <sub>8</sub> "	5"
1 x 8	5/8" x 7 <sup>1</sup> / <sub>8</sub> "	6 <sup>3</sup> / <sub>4</sub> "
1 x 6	23/32" x 5 <sup>3</sup> / <sub>8</sub> "	
1 x 8	23/32" x 7 <sup>1</sup> / <sub>8</sub> "	

## LOG CABIN SIDING WITH REVEAL



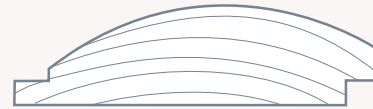
Nominal size	Actual size	Exposed face
2 x 6	1 <sup>1</sup> / <sub>2</sub> " x 5 <sup>7</sup> / <sub>16</sub> "	4 <sup>15</sup> / <sub>16</sub> "
2 x 8	1 <sup>1</sup> / <sub>2</sub> " x 7 <sup>1</sup> / <sub>8</sub> "	6 <sup>5</sup> / <sub>8</sub> "
2 x 10	1 <sup>1</sup> / <sub>2</sub> " x 9 <sup>1</sup> / <sub>8</sub> "	8 <sup>5</sup> / <sub>8</sub> "

## BEVELED SIDING



Nominal size	Actual size	Exposed face
1 x 6	3/4" x 5 <sup>1</sup> / <sub>2</sub> "	3/4" x 7 <sup>1</sup> / <sub>4</sub> "
1 x 8	4 <sup>45</sup> / <sub>64</sub> "	6 <sup>29</sup> / <sub>64</sub> "

## LOG CABIN SIDING



Nominal size	Actual size	Exposed face
2 x 6	1 <sup>1</sup> / <sub>2</sub> " x 5 <sup>7</sup> / <sub>16</sub> "	4 <sup>15</sup> / <sub>16</sub> "
2 x 8	1 <sup>1</sup> / <sub>2</sub> " x 7 <sup>1</sup> / <sub>8</sub> "	6 <sup>5</sup> / <sub>8</sub> "

## COLONIAL SIDING



Nominal size	Actual size	Exposed face
1 x 6	3/6" x 5 <sup>1</sup> / <sub>2</sub> "	5"
1 x 8	3/4" x 7 <sup>1</sup> / <sub>4</sub> "	6 <sup>3</sup> / <sub>4</sub> "

## SHIPLAP BUTT JOINT REVERSIBLE



Nominal size	Actual size	Exposed face
1 x 6	5/8" x 5 <sup>3</sup> / <sub>8</sub> "	4 <sup>7</sup> / <sub>8</sub> "
1 x 8	5/8" x 7 <sup>1</sup> / <sub>8</sub> "	6 <sup>5</sup> / <sub>8</sub> "
2 x 6	1 <sup>1</sup> / <sub>2</sub> " x 5 <sup>7</sup> / <sub>16</sub> "	4 <sup>15</sup> / <sub>16</sub> "
2 x 8	1 <sup>1</sup> / <sub>2</sub> " x 7 <sup>1</sup> / <sub>8</sub> "	6 <sup>5</sup> / <sub>8</sub> "

## DOLLY VARDEN/TOTEM SIDING



Nominal size	Actual size	Exposed face
1 x 6	21/32" x 5 <sup>1</sup> / <sub>2</sub> "	5"
1 x 8	21/32" x 7 <sup>1</sup> / <sub>4</sub> "	6 <sup>3</sup> / <sub>4</sub> "
5/4 x 8	1 <sup>1</sup> / <sub>4</sub> " x 7 <sup>1</sup> / <sub>4</sub> "	6 <sup>3</sup> / <sub>4</sub> "
5/4 x 10	1 <sup>1</sup> / <sub>4</sub> " x 9 <sup>1</sup> / <sub>4</sub> "	8 <sup>3</sup> / <sub>4</sub> "

## SHIPLAP NICKEL GAP



Nominal size	Actual size	Exposed face
1 x 6	11/16" x 5"	5"
1 x 8	11/16" x 6 <sup>25</sup> / <sub>32</sub> "	6.78"

## CHANNEL RUSTIC SIDING



Nominal size	Actual size	Exposed face
1 x 6	23/32" x 5 <sup>3</sup> / <sub>8</sub> "	4 <sup>7</sup> / <sub>8</sub> "
1 x 8	23/32" x 7 <sup>1</sup> / <sub>8</sub> "	6 <sup>5</sup> / <sub>8</sub> "
1 x 10	23/32" x 9 <sup>1</sup> / <sub>8</sub> "	8 <sup>5</sup> / <sub>8</sub> "

## WP-11 REVERSIBLE



Nominal size	Actual size	Exposed face
1 x 6	5/8" x 5 <sup>3</sup> / <sub>8</sub> "	4 <sup>7</sup> / <sub>8</sub> "
1 x 8	5/8" x 7 <sup>1</sup> / <sub>8</sub> "	6 <sup>5</sup> / <sub>8</sub> "
1 x 6	23/32" x 5 <sup>3</sup> / <sub>8</sub> "	4 <sup>7</sup> / <sub>8</sub> "
1 x 8	23/32" x 7 <sup>1</sup> / <sub>8</sub> "	6 <sup>5</sup> / <sub>8</sub> "



# PREMIUM PROFILED BOARD PATTERNS

## V RUSTIC



Nominal size	Actual size	Exposed face
1 x 6	5/8" x 5 <sup>3</sup> / <sub>8</sub> "	5"
1 x 8	5/8" x 7 <sup>1</sup> / <sub>8</sub> "	6 <sup>3</sup> / <sub>4</sub> "
1 x 6	23/32" x 5 <sup>3</sup> / <sub>8</sub> "	5"
1 x 8	23/32" x 7 <sup>1</sup> / <sub>8</sub> "	6 <sup>3</sup> / <sub>4</sub> "

## WP-18



Nominal size	Actual size	Exposed face
1 x 6	5/8" x 5 <sup>3</sup> / <sub>8</sub> "	5"
1 x 8	5/8" x 7 <sup>1</sup> / <sub>8</sub> "	6 <sup>3</sup> / <sub>4</sub> "
1 x 6	23/32" x 5 <sup>3</sup> / <sub>8</sub> "	5"
1 x 8	23/32" x 7 <sup>1</sup> / <sub>8</sub> "	6 <sup>3</sup> / <sub>4</sub> "

## T&G BUTT JOINT/NICKEL GAP REVERSIBLE



Nominal size	Actual size	Exposed face
1 x 6	5/8" x 5 <sup>3</sup> / <sub>8</sub> "	5"
1 x 8	5/8" x 7 <sup>1</sup> / <sub>8</sub> "	6 <sup>3</sup> / <sub>4</sub> "
2 x 6	1 <sup>1</sup> / <sub>2</sub> " x 5 <sup>7</sup> / <sub>16</sub> "	4 <sup>15</sup> / <sub>16</sub> "
2 x 8	1 <sup>1</sup> / <sub>2</sub> " x 7 <sup>1</sup> / <sub>8</sub> "	6 <sup>5</sup> / <sub>8</sub> "

## WP-4/NICKEL GAP REVERSIBLE



Nominal size	Actual size	Exposed face
1 x 6	5/8" x 5 <sup>3</sup> / <sub>8</sub> "	5"
1 x 8	5/8" x 7 <sup>1</sup> / <sub>8</sub> "	6 <sup>3</sup> / <sub>4</sub> "
1 x 6	23/32" x 5 <sup>3</sup> / <sub>8</sub> "	5"
1 x 8	23/32" x 7 <sup>1</sup> / <sub>8</sub> "	6 <sup>3</sup> / <sub>4</sub> "

## T&G BUTT JOINT



Nominal size	Actual size	Exposed face
1 x 6	5/8" x 5 <sup>3</sup> / <sub>8</sub> "	5"
1 x 8	5/8" x 7 <sup>1</sup> / <sub>8</sub> "	6 <sup>3</sup> / <sub>4</sub> "
2 x 6	1 <sup>1</sup> / <sub>2</sub> " x 5 <sup>7</sup> / <sub>16</sub> "	4 <sup>15</sup> / <sub>16</sub> "
2 x 8	1 <sup>1</sup> / <sub>2</sub> " x 7 <sup>1</sup> / <sub>8</sub> "	6 <sup>5</sup> / <sub>8</sub> "

## WP-4/WP-18 REVERSIBLE



Nominal size	Actual size	Exposed face
1 x 6	5/8" x 5 <sup>3</sup> / <sub>8</sub> "	5"
1 x 8	5/8" x 7 <sup>1</sup> / <sub>8</sub> "	6 <sup>3</sup> / <sub>4</sub> "
1 x 6	23/32" x 5 <sup>3</sup> / <sub>8</sub> "	5"
1 x 8	23/32" x 7 <sup>1</sup> / <sub>8</sub> "	6 <sup>3</sup> / <sub>4</sub> "

## WP-4



Nominal size	Actual size	Exposed face
1 x 6	11/16" x 5 <sup>1</sup> / <sub>16</sub> "	5"
1 x 8	11/16" x 7 <sup>1</sup> / <sub>8</sub> "	6 <sup>3</sup> / <sub>4</sub> "

## Beaded Ceiling



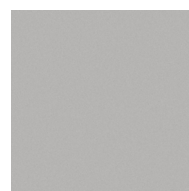
Nominal size	Actual size	Exposed face
1 x 4	5/8" x 5 <sup>3</sup> / <sub>8</sub> "	3 <sup>1</sup> / <sub>8</sub> "
1 x 8	5/8" x 5 <sup>3</sup> / <sub>8</sub> "	5 <sup>1</sup> / <sub>8</sub> "
1 x 4	23/32" x 3 <sup>3</sup> / <sub>8</sub> "	3 <sup>1</sup> / <sub>8</sub> "
1 x 8	23/32" x 5 <sup>3</sup> / <sub>8</sub> "	5 <sup>1</sup> / <sub>8</sub> "

## WP-4 REVERSIBLE

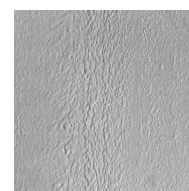


Nominal size	Actual size	Exposed face
1 x 6	11/16" x 5 <sup>1</sup> / <sub>16</sub> "	5"
1 x 8	11/16" x 7 <sup>1</sup> / <sub>8</sub> "	6 <sup>3</sup> / <sub>4</sub> "

## SURFACE OPTIONS



SMOOTH



ROUGH SAWN



WIRE BRUSHED