

# TONGUE AND GROOVE SIDING INSTALLATION GUIDELINES

## Installation Guidelines

Tongue and groove siding can be installed horizontally or vertically. In horizontal applications, start at the bottom and work up, with the groove edges facing downward to assure a weather-tight wall. Siding up to 6" (152mm) wide can be blind-nailed, with one siding nail per bearing toe-nailed through the base of each tongue. Wider siding should be face-nailed using two nails per bearing. Ring shank nails must penetrate 1-1/2" (32mm) into solid wood (see illustration).

In vertical applications, start at one corner with grooved edge facing toward the adjacent wall. Use a level or plumb line to ensure that the first board is installed vertically. The grooved edge of the first board may have to be trimmed to ensure a flush fit. Siding is nailed to exterior sheathing (see illustration). As with horizontal installations, pieces up to 6" (152mm) can be blind-nailed and wider pieces should be face-nailed. Use weather barrier after sheathing for exterior applications of walls. Ceilings must have exterior sheathing.

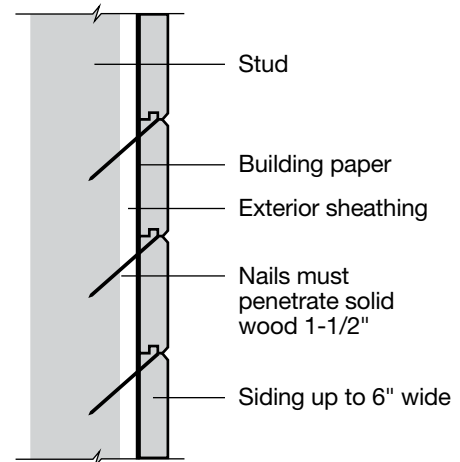
Our siding products are kiln-dried to minimize the effects of swelling and shrinking. As with all lumber products, care in handling and installation delivers the best results. To ensure your complete satisfaction, we recommend the following:

- Precondition (acclimate) material for 10-14 days by storing it in the room where it will be installed
- Prime or prefinish sides, edges and ends after preconditioning, but before installation. This reduces the appearance of unfinished lines that may result from further shrinkage after installation.

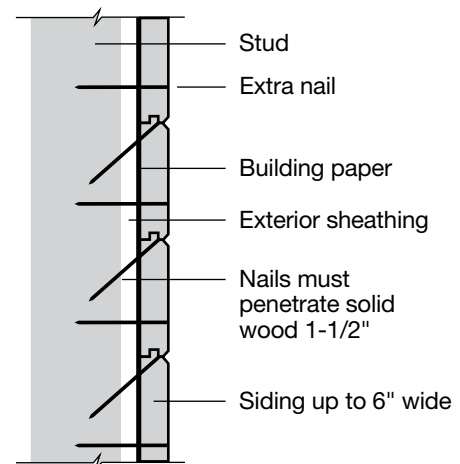
## Disclaimers

This brochure is for illustration purposes only. Use of this product must be in accordance with all local zoning and/or building codes. Consumer assumes all risks and liability associated with the use of this product. For details on safe handling, go to [UFPI.com/SafeHandling](http://UFPI.com/SafeHandling). Warrantor does not provide any warranty, either express or implied, and shall not be liable for any damages, including consequential damages.

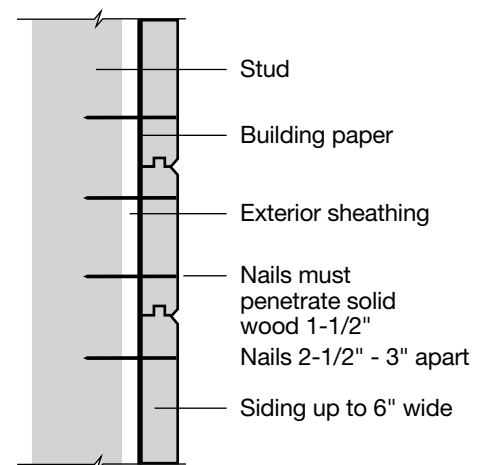
## Illustrations



A. 6" and narrower siding in normal conditions



B. 6" and narrower siding in hot, dry, windy or seacoast climates



C. 8" and wider siding